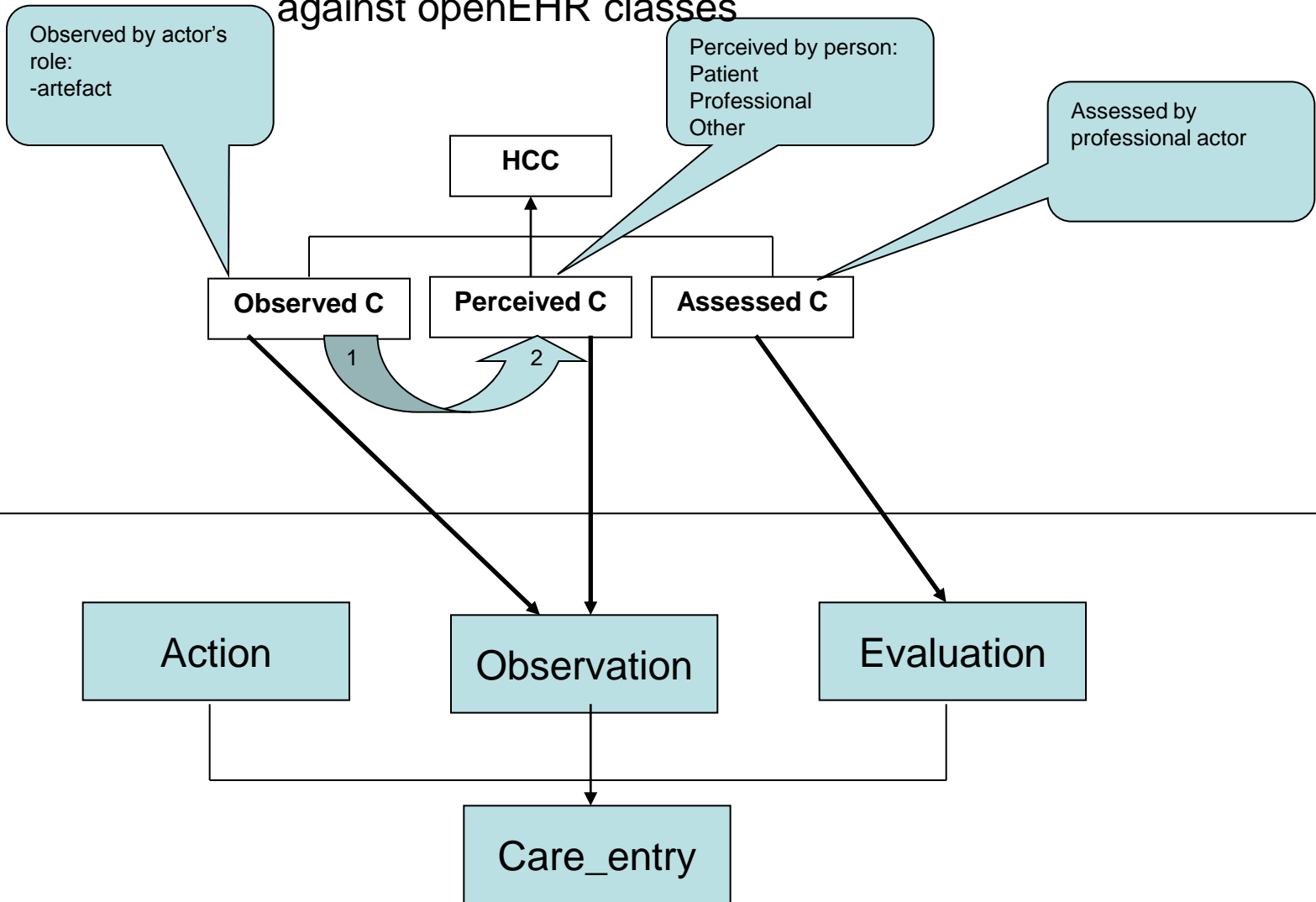


SNOMED CT concept model attributes and archetype integration and terminology binding

20101103
Jessica Rosenälv
Lund



Archetype structure

Specializing a class in openEHR reference model



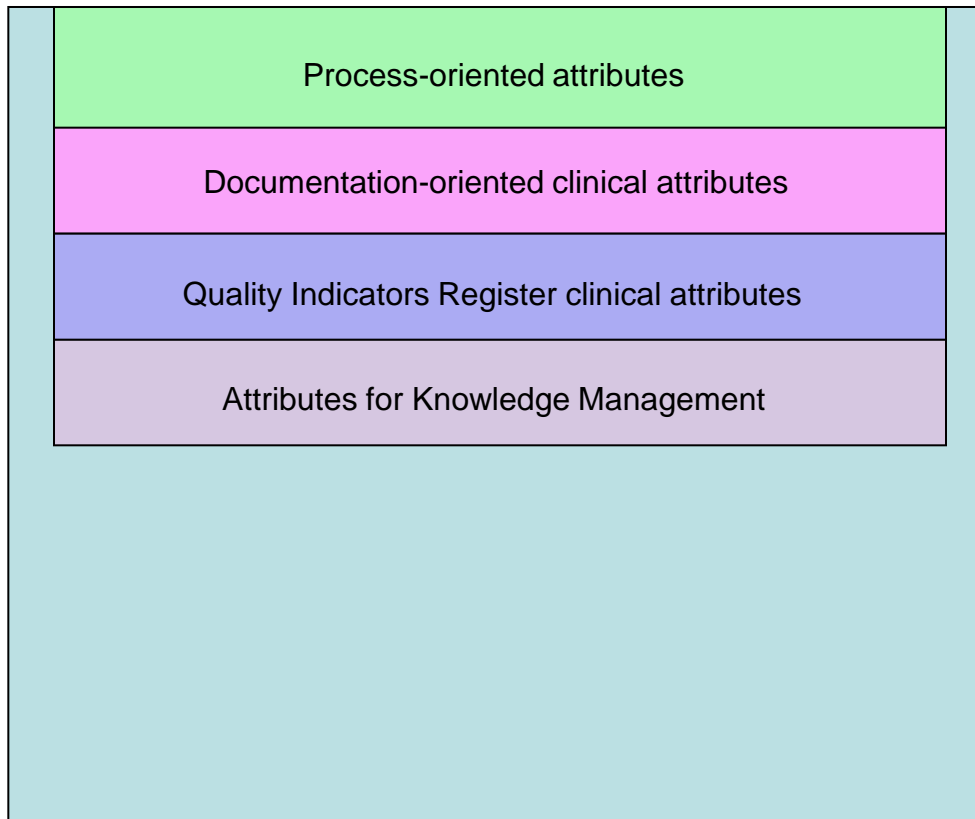
Perceived Health Care Condition

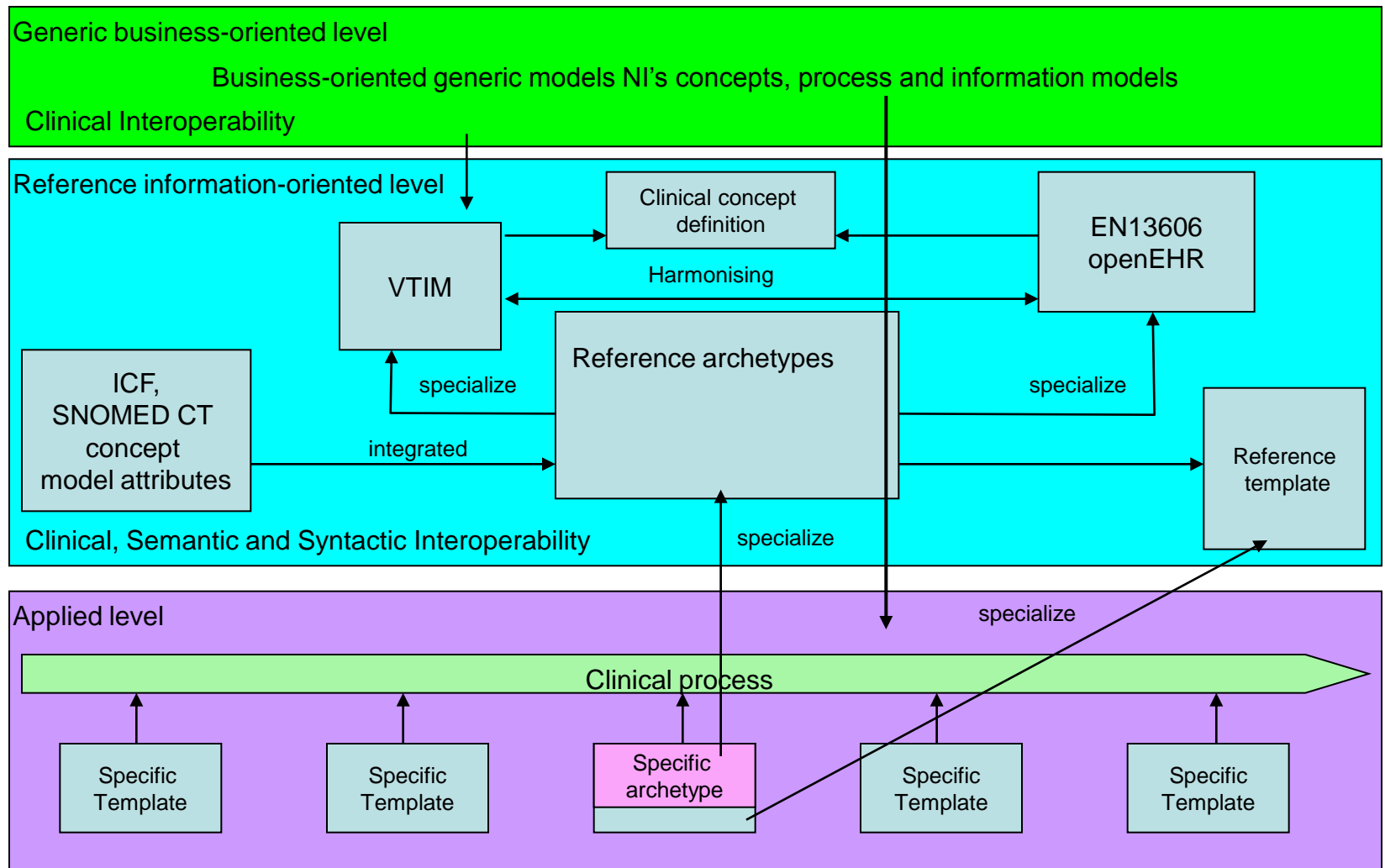
Specializing Observation in openEHR reference model

Process-oriented attributes	
Health issue thread/id	1-*
Health issue/id	0-*
Request/id	0-*
Health problem type/id	0-*
Point of time for perceiving	1-*

Perceived Health Care Condition

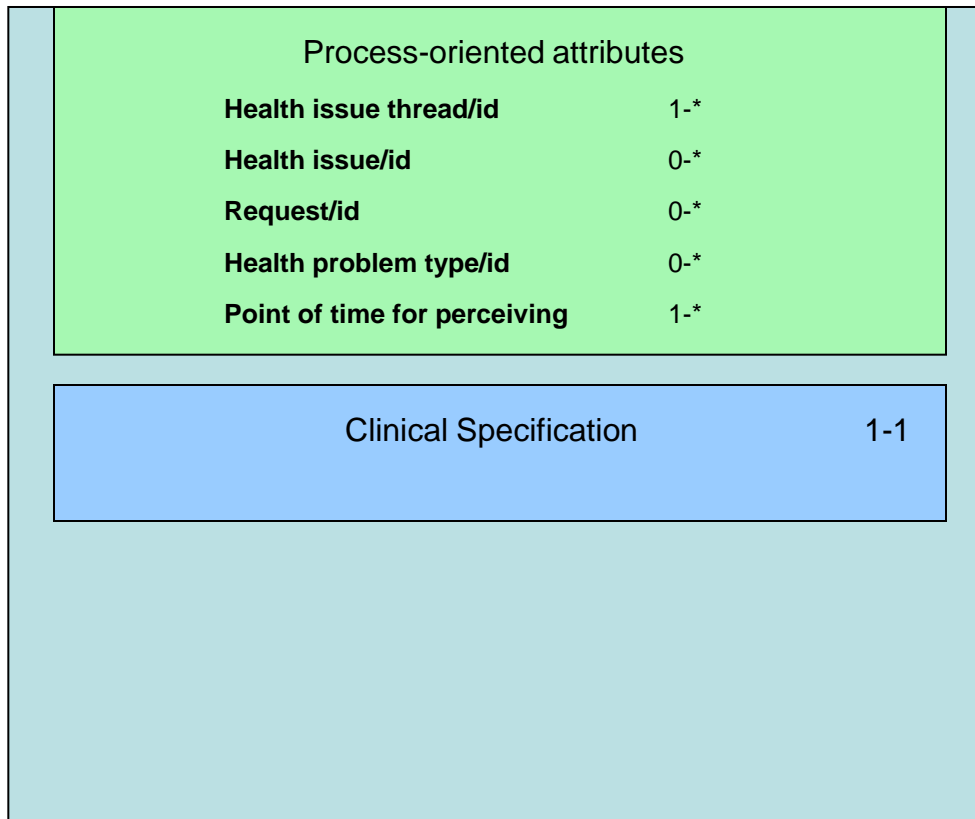
Specializing Observation in openEHR reference model





Perceived Health Care Condition

Specializing Observation in openEHR reference model

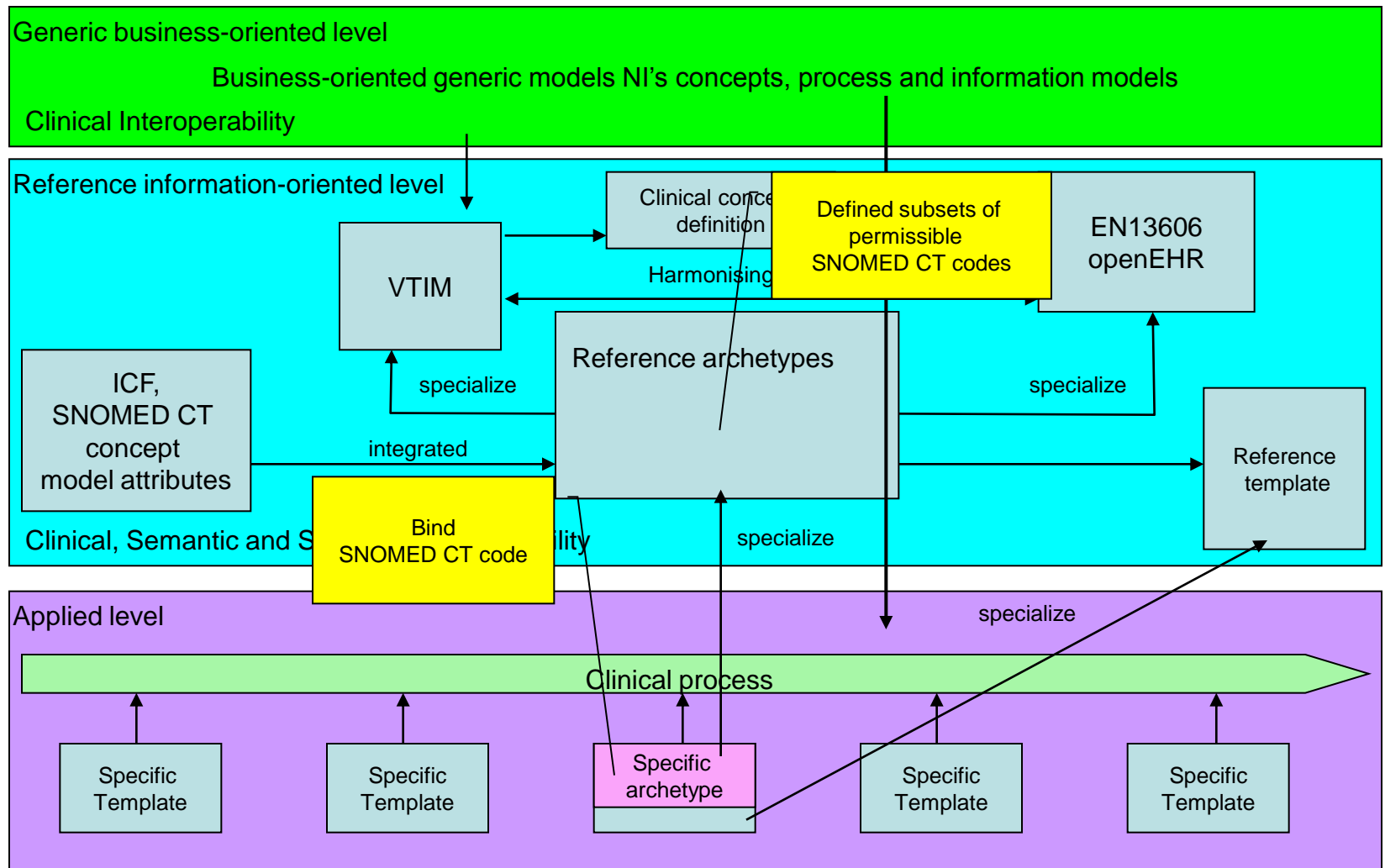


Clinical Specification

ICF's 5 health components		SNOMED CT Clinical Findings attributes	
Body structure	0-*	Finding site	0-1
		Anatomical structure	0-1
		Acquired body structure	0-1
		Associated morphology	0-1
		Associated with	
		After clinical finding	
		After procedure	
		Due to clinical finding	
		Due to procedure	
		Causative agent	
		Causative agent: Organism	
		Causative agent: Substance	
		Causative agent: Physical	
		Causative agent: Physical	
		Causative agent: Pharmaceutical product	
		Severity	
		Perceived aspect (Interpretation)	
		Perceived aspect: Has interpretation	
		Perceived aspect: value (range)	
		Perceived aspect: result comments	0-1
Body function	0-*		
Activity	0-*		
Participation	0-*		
Environmental factors	0-*		

Permissible values:

- {Body organ structure (body structure)
- Body region structure (body structure)
- Body space structure (body structure)
- Body system structure (body structure)
- Body tissue structure (body structure)
- Body wall structure (body structure)
- Cell structure (cell structure)
- Developmental body structure (body structure)
- Entire anatomical structure (body structure)
- Human body structure (body structure)
- Intercellular anatomical structure (body structure)
- Non-human body structure (body structure)
- Sex structure (body structure)
- Structure of multiple topographic sites (body structure)
- Structure of product of conception (body structure)
- Transplant (body structure)}



Reference archetypes

- Perceived Condition
- Assessed Condition
- Observed Condition
- Observed/perceived aspect
- Activity
- Resource
- Health issue thread
- Request
- Activity changing event
- Activity plan
- Target Condition
- Standard Health Care Plan
- Demographic archetypes